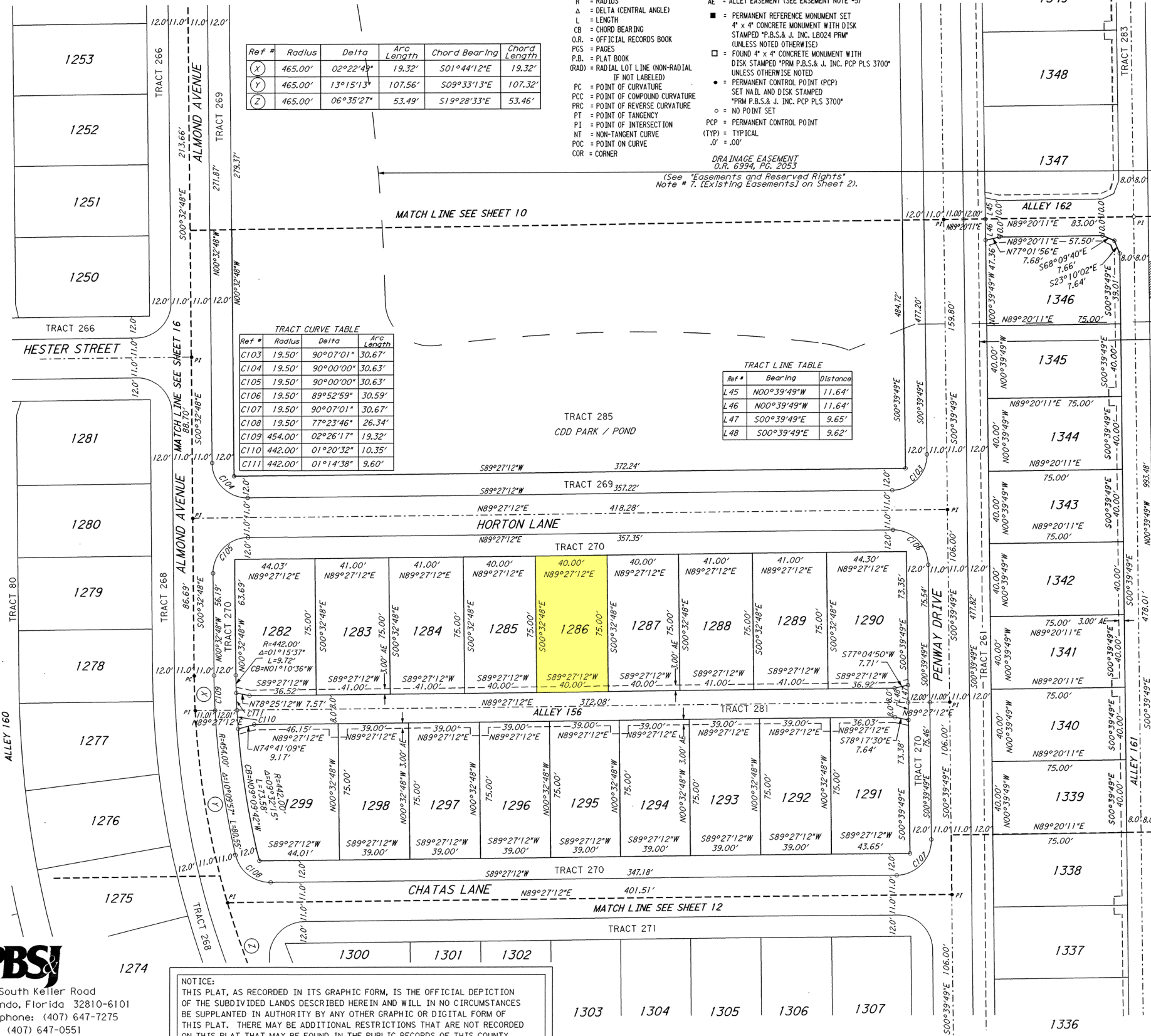


BALDWIN PARK UNIT 9A

PLATTING A PORTION SECTIONS 16 & 21, TOWNSHIP 22 SOUTH, RANGE 30 EAST
CITY OF ORLANDO, ORANGE COUNTY, FLORIDA

1254

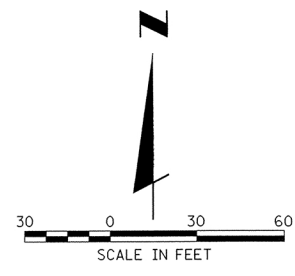


Ref #	Radius	Delta	Arc Length	Chord Bearing	Chord Length
(X)	465.00'	02°22'49"	19.32'	S01°44'12"E	19.32'
(Y)	465.00'	13°15'13"	107.56'	S09°33'13"E	107.32'
(Z)	465.00'	06°35'27"	53.49'	S19°28'33"E	53.46'

Ref #	Radius	Delta	Arc Length
C103	19.50'	90°07'01"	30.67'
C104	19.50'	90°00'00"	30.63'
C105	19.50'	90°00'00"	30.63'
C106	19.50'	89°52'59"	30.59'
C107	19.50'	90°07'01"	30.67'
C108	19.50'	77°23'46"	26.34'
C109	454.00'	02°26'17"	19.32'
C110	442.00'	01°20'32"	10.35'
C111	442.00'	01°14'38"	9.60'

Ref #	Bearing	Distance
L45	N00°39'49"W	11.64'
L46	N00°39'49"W	11.64'
L47	S00°39'49"E	9.65'
L48	S00°39'49"E	9.62'

- LEGEND**
- R = RADIUS
 - Δ = DELTA (CENTRAL ANGLE)
 - L = LENGTH
 - CB = CHORD BEARING
 - O.R. = OFFICIAL RECORDS BOOK
 - P.S. = PAGES
 - P.B. = PLAT BOOK
 - GRAD = RADIAL LOT LINE (NON-RADIAL IF NOT LABELED)
 - PC = POINT OF CURVATURE
 - PCC = POINT OF COMPOUND CURVATURE
 - PRC = POINT OF REVERSE CURVATURE
 - PT = POINT OF TANGENCY
 - PI = POINT OF INTERSECTION
 - NT = NON-TANGENT CURVE
 - POC = POINT ON CURVE
 - COR = CORNER
- LEGEND**
- AE = ALLEY EASEMENT (SEE EASEMENT NOTE #5)
 - = PERMANENT REFERENCE MONUMENT SET 4" x 4" CONCRETE MONUMENT WITH DISK STAMPED "P.B.S. & J. INC. LB024 PRM" (UNLESS NOTED OTHERWISE)
 - = FOUND 4" x 4" CONCRETE MONUMENT WITH DISK STAMPED "PRM P.B.S. & J. INC. PCP PLS 3700" (UNLESS OTHERWISE NOTED)
 - = PERMANENT CONTROL POINT (PCP) SET NAIL AND DISK STAMPED "PRM P.B.S. & J. INC. PCP PLS 3700"
 - = NO POINT SET
 - = PERMANENT CONTROL POINT (TYP) = TYPICAL
 - ∅ = .00'
- DRAINAGE EASEMENT
O.R. 6994, PG. 2053
(See "Easements and Reserved Rights" Note # 7, [Existing Easements] on Sheet 2).



PBS&J
482 South Keller Road
Orlando, Florida 32810-6101
Telephone: (407) 647-7275
Fax: (407) 647-0551
Certificate Number: LB 024

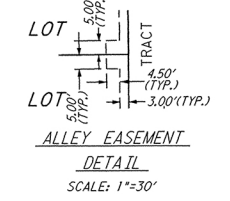
NOTICE:
THIS PLAT, AS RECORDED IN ITS GRAPHIC FORM, IS THE OFFICIAL DEPICTION OF THE SUBDIVIDED LANDS DESCRIBED HEREIN AND WILL IN NO CIRCUMSTANCES BE SUPPLANTED IN AUTHORITY BY ANY OTHER GRAPHIC OR DIGITAL FORM OF THIS PLAT. THERE MAY BE ADDITIONAL RESTRICTIONS THAT ARE NOT RECORDED ON THIS PLAT THAT MAY BE FOUND IN THE PUBLIC RECORDS OF THIS COUNTY.

TEMPORARY CONSTRUCTION & DRAINAGE EASEMENT
O.R. 6203, PG. 5009
O.R. 6203, PG. 4966, &
O.R. 6394, PG. 2070;
(See "Easements and Reserved Rights" Note # 7, [Existing Easements] on Sheet 2).

NW COR.
SPECIAL WARRANTY DEED
O.R. 6994, PG. 2033

DRAINAGE EASEMENT
DETAIL
SCALE: 1" = 30'

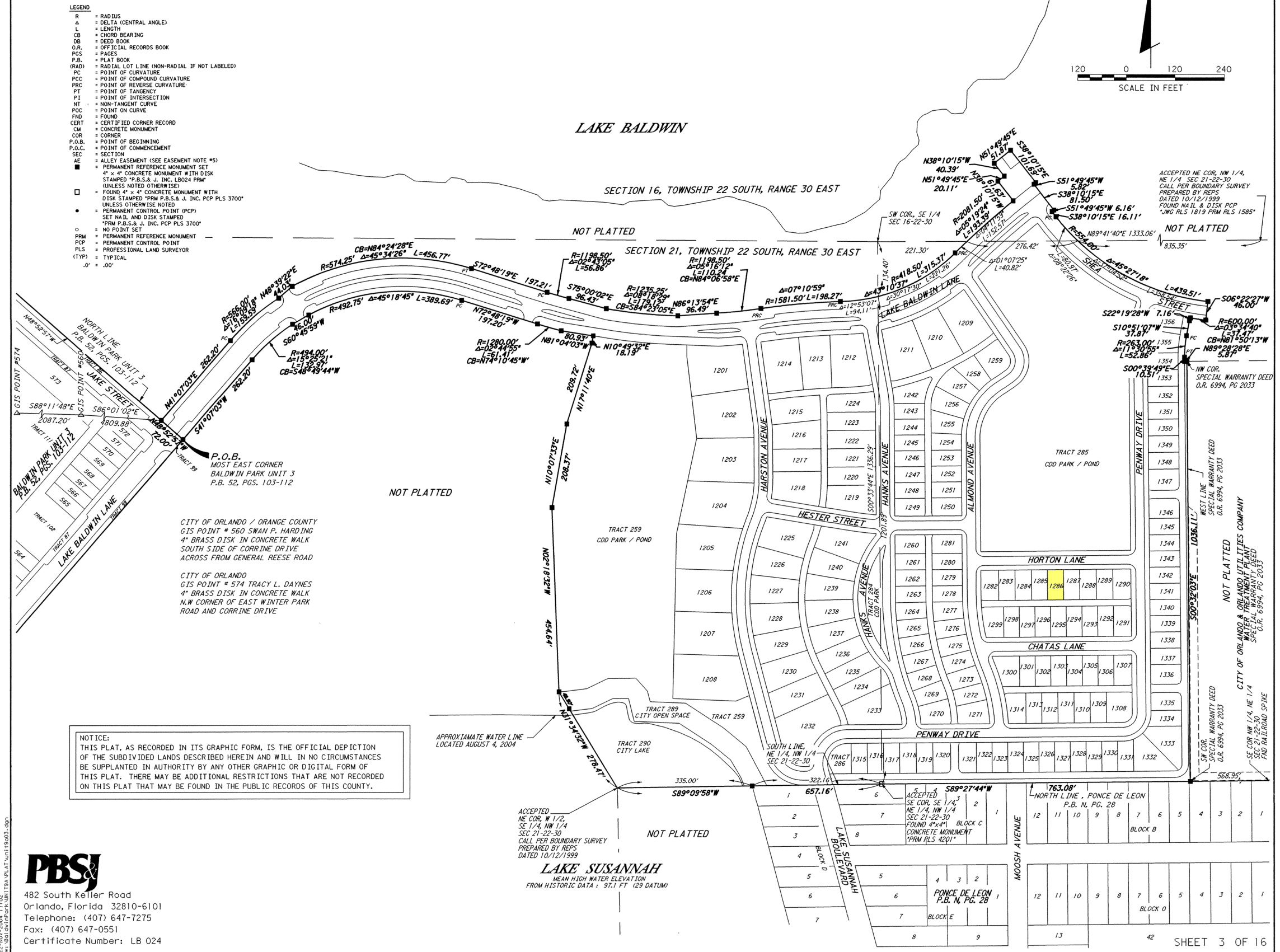
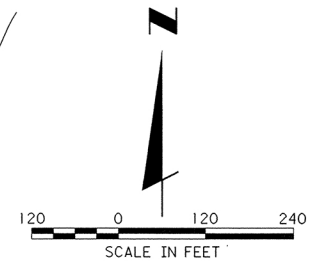
SPECIAL WARRANTY DEED
O.R. 6994, PG. 2033
CITY OF ORLANDO &
ORLANDO UTILITIES COMPANY
WATER TREATMENT PLANT
NOT PLATTED



BALDWIN PARK UNIT 9A

PLATTING A PORTION SECTIONS 16 & 21, TOWNSHIP 22 SOUTH, RANGE 30 EAST
CITY OF ORLANDO, ORANGE COUNTY, FLORIDA

- LEGEND**
- R = RADIUS
 - Δ = DELTA (CENTRAL ANGLE)
 - L = LENGTH
 - CB = CHORD BEARING
 - OB = DEED BOOK
 - O.R. = OFFICIAL RECORDS BOOK
 - P.G.S. = PAGES
 - P.B. = PLAT BOOK
 - (RAD) = RADIAL LOT LINE (NON-RADIAL IF NOT LABELED)
 - PC = POINT OF CURVATURE
 - POC = POINT OF COMPOUND CURVATURE
 - PRC = POINT OF REVERSE CURVATURE
 - PT = POINT OF TANGENCY
 - PI = POINT OF INTERSECTION
 - NT = NON-TANGENT CURVE
 - POC = POINT ON CURVE
 - FND = FOUND
 - CERT = CERTIFIED CORNER RECORD
 - CM = CONCRETE MONUMENT
 - COR = CORNER
 - P.O.B. = POINT OF BEGINNING
 - P.O.C. = POINT OF COMMENCEMENT
 - SEC = SECTION
 - AE = ALLEY EASEMENT (SEE EASEMENT NOTE *5)
 - = PERMANENT REFERENCE MONUMENT SET 4" x 4" CONCRETE MONUMENT WITH DISK STAMPED "P.B.S.&J. INC. LB024 PFM"
 - (UNLESS NOTED OTHERWISE) = FOUND 4" x 4" CONCRETE MONUMENT WITH DISK STAMPED "PRM P.B.S.&J. INC. PCP PLS 3700"
 - (UNLESS OTHERWISE NOTED) = PERMANENT CONTROL POINT (PCP) SET NAIL AND DISK STAMPED "PRM P.B.S.&J. INC. PCP PLS 3700"
 - = NO POINT SET
 - PRM = PERMANENT REFERENCE MONUMENT
 - PCP = PERMANENT CONTROL POINT
 - PLS = PROFESSIONAL LAND SURVEYOR
 - (TYP) = TYPICAL
 - ∅ = .00'



NOTICE:
THIS PLAT, AS RECORDED IN ITS GRAPHIC FORM, IS THE OFFICIAL DEPICTION OF THE SUBDIVIDED LANDS DESCRIBED HEREIN AND WILL IN NO CIRCUMSTANCES BE SUPPLANTED IN AUTHORITY BY ANY OTHER GRAPHIC OR DIGITAL FORM OF THIS PLAT. THERE MAY BE ADDITIONAL RESTRICTIONS THAT ARE NOT RECORDED ON THIS PLAT THAT MAY BE FOUND IN THE PUBLIC RECORDS OF THIS COUNTY.

CITY OF ORLANDO / ORANGE COUNTY
GIS POINT # 560 SWAN P. HARDING
4" BRASS DISK IN CONCRETE WALK
SOUTH SIDE OF CORRIE DRIVE
ACROSS FROM GENERAL REESE ROAD

CITY OF ORLANDO
GIS POINT # 574 TRACY L. DAYNES
4" BRASS DISK IN CONCRETE WALK
NW CORNER OF EAST WINTER PARK
ROAD AND CORRIE DRIVE

ACCEPTED
NE COR. W 1/4,
SE 1/4, NW 1/4
SEC 21-22-30
CALL PER BOUNDARY SURVEY
PREPARED BY REFS
DATED 10/12/1999

LAKE SUSANNAH
MEAN HIGH WATER ELEVATION
FROM HISTORIC DATA : 91.1 FT. (29 DATUM)

ACCEPTED NE COR. NW 1/4,
NE 1/4 SEC 21-22-30
CALL PER BOUNDARY SURVEY
PREPARED BY REFS
DATED 10/12/1999
FOUND NAIL & DISK PCP
JWG RLS 1819 PRM RLS 1585

ACCEPTED NE COR. NW 1/4,
NE 1/4 SEC 21-22-30
CALL PER BOUNDARY SURVEY
PREPARED BY REFS
DATED 10/12/1999
FOUND NAIL & DISK PCP
JWG RLS 1819 PRM RLS 1585

NOT PLATTED
CITY OF ORLANDO & ORLANDO UTILITIES COMPANY
WATER TREATMENT PLANT
SPECIAL WARRANTY DEED
O.R. 6394, PG 2033

PBS&J
482 South Keller Road
Orlando, Florida 32810-6101
Telephone: (407) 647-7275
Fax: (407) 647-0551
Certificate Number: LB 024