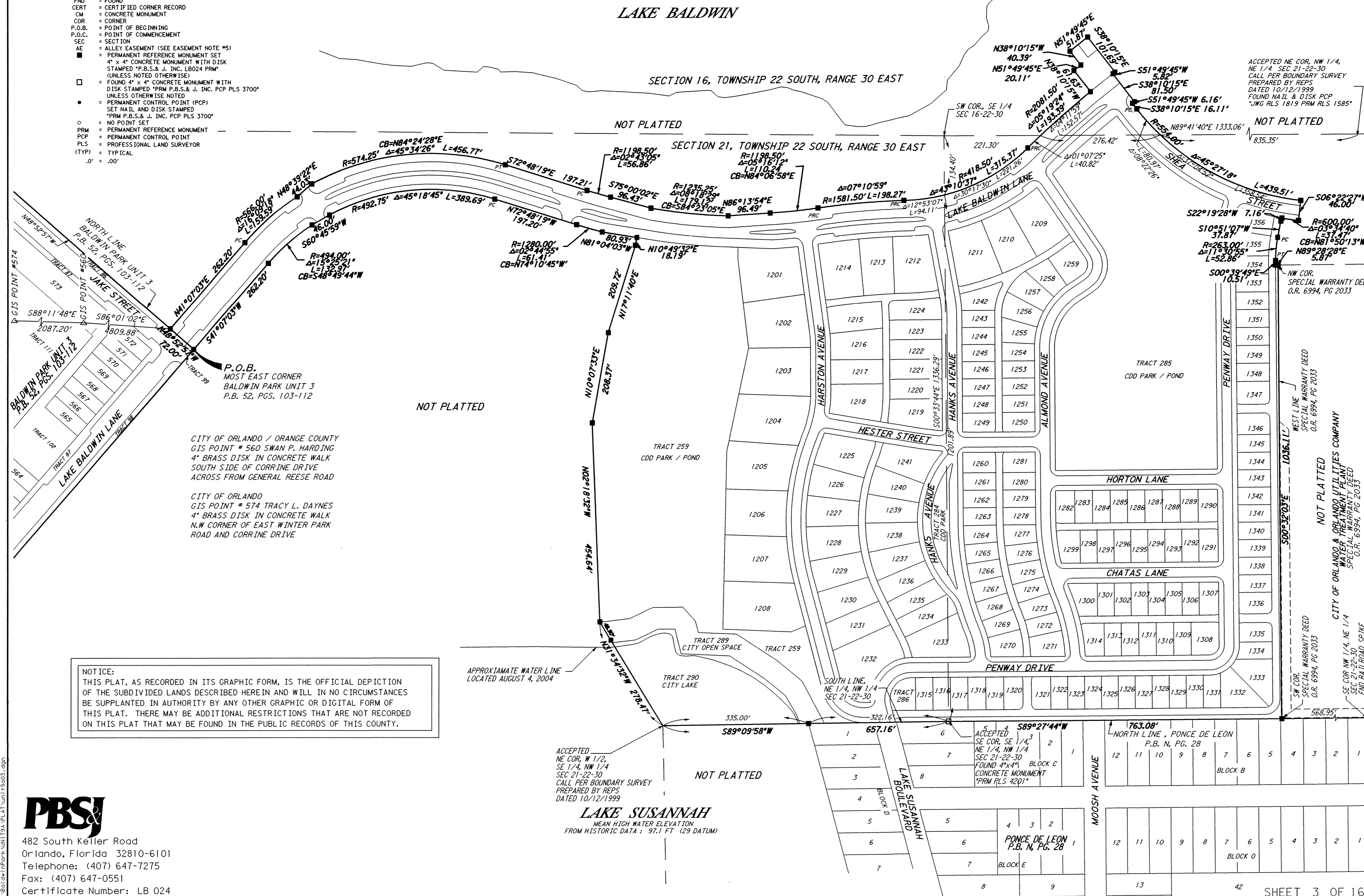
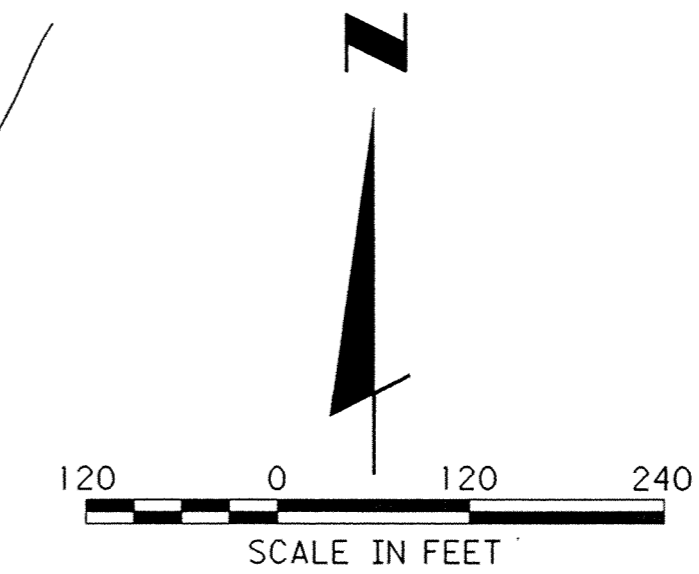


BALDWIN PARK UNIT 9A

PLATTING A PORTION SECTIONS 16 & 21, TOWNSHIP 22 SOUTH, RANGE 30 EAST
CITY OF ORLANDO, ORANGE COUNTY, FLORIDA

- LEGEND**
- R = RADIUS
 - Δ = DELTA (CENTRAL ANGLE)
 - L = LENGTH
 - CB = CHORD BEARING
 - DB = DEED BOOK
 - O.R. = OFFICIAL RECORDS BOOK
 - PGS = PAGES
 - P.B. = PLAT BOOK
 - (RAD) = RADIAL LOT LINE (NON-RADIAL IF NOT LABELED)
 - PC = POINT OF CURVATURE
 - PCC = POINT OF COMPOUND CURVATURE
 - PRC = POINT OF REVERSE CURVATURE
 - PT = POINT OF TANGENCY
 - PI = POINT OF INTERSECTION
 - NT = NON-TANGENT CURVE
 - POC = POINT ON CURVE
 - FND = FOUND
 - CERT = CERTIFIED CORNER RECORD
 - CM = CONCRETE MONUMENT
 - COR = CORNER
 - P.O.B. = POINT OF BEGINNING
 - P.O.C. = POINT OF COMMENCEMENT
 - SEC = SECTION
 - AE = ALLEY EASEMENT (SEE EASEMENT NOTE #5)
 - = PERMANENT REFERENCE MONUMENT SET 4" x 4" CONCRETE MONUMENT WITH DISK STAMPED "P.B.S. & J. INC. LBO24 FRM" (UNLESS NOTED OTHERWISE)
 - = FOUND 4" x 4" CONCRETE MONUMENT WITH DISK STAMPED "PRM P.B.S. & J. INC. PCP PLS 3700" (UNLESS OTHERWISE NOTED)
 - = PERMANENT CONTROL POINT (PCP) SET NAIL AND DISK STAMPED "PRM P.B.S. & J. INC. PCP PLS 3700"
 - = NO POINT SET
 - = PERMANENT REFERENCE MONUMENT
 - PCP = PERMANENT CONTROL POINT
 - PLS = PROFESSIONAL LAND SURVEYOR
 - (TYP) = TYPICAL
 - ∠ = 00'



NOTICE:
THIS PLAT, AS RECORDED IN ITS GRAPHIC FORM, IS THE OFFICIAL DEPICTION OF THE SUBDIVIDED LANDS DESCRIBED HEREIN AND WILL, IN NO CIRCUMSTANCES BE SUPPLANTED IN AUTHORITY BY ANY OTHER GRAPHIC OR DIGITAL FORM OF THIS PLAT. THERE MAY BE ADDITIONAL RESTRICTIONS THAT ARE NOT RECORDED ON THIS PLAT THAT MAY BE FOUND IN THE PUBLIC RECORDS OF THIS COUNTY.

CITY OF ORLANDO / ORANGE COUNTY
GIS POINT # 560 SWAN P. HARDING
4" BRASS DISK IN CONCRETE WALK
SOUTH SIDE OF CORRINE DRIVE
ACROSS FROM GENERAL REESE ROAD

CITY OF ORLANDO
GIS POINT # 574 TRACY L. DAYNES
4" BRASS DISK IN CONCRETE WALK
N.W. CORNER OF EAST WINTER PARK
ROAD AND CORRINE DRIVE

APPROXIMATE WATER LINE
LOCATED AUGUST 4, 2004

ACCEPTED
NE COR. W 1/2,
SE 1/4, NW 1/4
SEC 21-22-30
CALL PER BOUNDARY SURVEY
PREPARED BY REPS
DATED 10/12/1999

LAKE SUSANNAH
MEAN HIGH WATER ELEVATION
FROM HISTORIC DATA: 97.1 FT. (29 DATUM)

ACCEPTED
SE COR. SE 1/4,
NE 1/4, NW 1/4
SEC 21-22-30
FOUND 4"x4" BLOCK C
CONCRETE MONUMENT
"PRM PLS 420"

ACCEPTED NE COR. NW 1/4,
NE 1/4, SEC 21-22-30
CALL PER BOUNDARY SURVEY
PREPARED BY REPS
DATED 10/12/1999
FOUND NAIL & DISK PCP
"JWG RLS 1819 FRM RLS 1585"

WEST LINE
SPECIAL WARRANTY DEED
O.R. 6994, PG 2033

NOT PLATTED
CITY OF ORLANDO & ORLANDO UTILITIES COMPANY
WATER TREATMENT PLANT
SPECIAL WARRANTY DEED
O.R. 6994, PG 2033

SW COR.
SPECIAL WARRANTY DEED
O.R. 6994, PG 2033

SE COR. NW 1/4, NE 1/4
SEC 21-22-30
FOUND RAILROAD SPIKE

PBS&J
482 South Keller Road
Orlando, Florida 32810-6101
Telephone: (407) 647-7275
Fax: (407) 647-0551
Certificate Number: LB 024

